

2018/2019

PLAY



THE
PARASITE DESIGN
ADVENTURE

› THE BRAND_

The Parasite Design Adventure 4
Futuristic Technologies 6
Collabs 8

› STAGE 01_
REMEMBER THE FUTURE

Avenir 1-2-3-4 12
Memories 1-2-3 14
Anti-Rétro 1-2-3 16
Anti-Rétro 5-6-X 18

› STAGE 02_
DNA OF TOMORROW

Gène 1-2-3 22
Gamma 1-2 24
Genome 1-3-4 26
Genome 5-6 28
Genome 7-8 30

› STAGE 03_
BECOME A SUPER HUMAN

Data 1 / Quantiq 1 34
Zeta 0 / Valhalla 0 / Mecha 0 36
Mecha 1-2-4 / Molecule 2 38

› FINAL STAGE_
PARANORMAL ACTIVITIES

Valhalla 1-X / Varana 3-4 42
Mazinger X-Y / Re-Nerve 44
Orion / Hyperion / Mercure 1-2 46

› BONUS STAGE_
PARASITE DESIGN LAB

Design lab 48

› ENVIRONMENT_

Communication 50



PARASITE

SCIENCE VISION



Parasite is a transcendence of existence, a supernatural interpretation of reality.

Wearing Parasite is an odyssey to our deepest nature to reveal our «super-self».

The Parasite universe is an enlightened vision of contemporary social themes projected in a world of anticipation.

Parasite est une transcendance de la réalité, une interprétation surnaturelle du réel.

Porter Parasite est une odyssée vers notre nature profonde afin de révéler notre «super-moi».

L'univers de Parasite est une vision éclairée des thèmes de la société contemporaine projetés dans un monde d'anticipation.

PREMIUM UNDERGROUND



In 2002, Parasite revolutionized the eyewear industry with its introduction of the active «STEREO» system. Since then, the brand, always independent, has positioned itself as a leader of design and innovation.

Parasite a révolutionné la lunetterie en 2002 avec son système de maintien actif «STEREO». Depuis, la marque, toujours indépendante, s'est imposée comme une référence en termes de design et d'innovation.

PARASITE

PARASIT

ANTI-MATTER



The Anti-Matter stems from a new technological process called 3D printing. A laser beam polymerizes layer after layer a polyamide powder to build a solid compact object, strong, flexible and lightweight.

L'anti-matière est le résultat d'un procédé technologique d'impression 3D. Un laser polymérise strate par strate de la poudre de polyamide pour former un corps uniforme, à la fois solide, souple et léger.

LED



The LED technology is based on a thin polyamide crystal structure, subjected to a vacuum metal treatment on one of its side. By modifying the density of the vacuum metal treatment we can obtain a variety of iridescent colors throughout the entire spectrum. We are also using this technology on some of our lenses.

La technologie LED s'appuie sur une structure cristalline légère en polyamide qui subit une métallisation sous vide de l'une de ses faces. La densité de la métallisation permet de faire varier les effets d'irisation de la couleur sur tout le spectre. Cette technologie est aussi utilisée sur certains de nos verres.

STEELSKIN



The STEELSKIN material is a lightweight stainless steel, both flexible and hypoallergenic. Our proprietary method of cutting and engraving by photogravure, allows us to produce rarely seen intricate and beautiful designs.

Le métal STEELSKIN est un acier inoxydable léger, flexible et anallergique. Notre procédé spécifique de découpe et de gravage par photogravure permet de réaliser des détails d'une précision et d'une esthétique rare.

DESIGN AND MADE IN FRANCE



Comfort and lightness are the driving forces of our product design. Manufactured in France, our product is of exceptional quality.

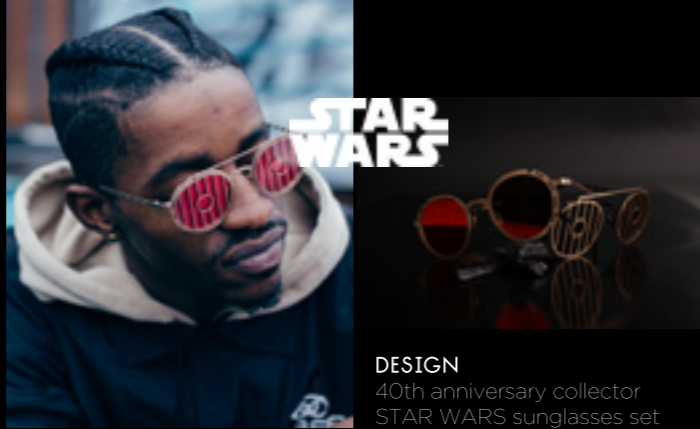
Le confort, légèreté et technologie sont la ligne de conduite du design. Les produits, fabriqués en France, sont d'une qualité exceptionnelle.

PARASIT



Every season, the «Parasite Design Lab» studio works on limited edition «concept eyewear» and «cross-projects» to experiment interaction between human and eyewear.

Chaque saison, le studio «Parasite Design Lab» travaille sur des «concept eyewear» et des projets collaboratifs en édition limitée. Un travail expérimental sur le rapport entre les lunettes et l'humain.



DESIGN
40th anniversary collector
STAR WARS sunglasses set



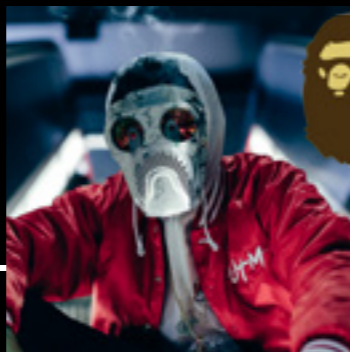
ENTERTAINEMENT
WESTWORLD - HBO



LIMITED EDITION
WU-LAB mask



ENTERTAINEMENT
TOMORROWLAND / DISNEY



DESIGN - LIMITED EDITION
A BATHING APE mask



ARTIST
SNOOP DOGG



DESIGN - LIMITED EDITION
90th anniversary collector
MICKEY sunglasses/mask



ARTIST
RZA



FASHION PROJECTS
DREAMS ON AIR



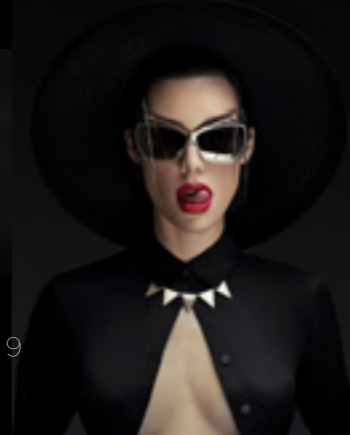
CAMPAIGN
2016 CHAMPION ad campaign



ARTIST
LIL YACHTY



ARTIST
KILLASON



FASHION PROJECT
FACE / NYC

▶ **STAGE 01_**
REMEMBER THE
FUTURE



STAGE 01_

AVENIR 1-2-3-4



AVENIR 1

54 □ 19 H44



C17
BLACK RED LED
NOIR ROUGE LED



C25
GOLD PINK CRISTAL CHROME
OR ROSE CRISTAL CHROME

C72M
BLACK ANTI-MATTER BLUE
NOIR ANTI-MATIÈRE BLEU

C79M
GOLD ANTI-MATTER BLACK
OR ANTI-MATIÈRE NOIR

AVENIR 2

50 □ 20 H44



C25
GOLD CRISTAL CHROME
OR CRISTAL CHROME



C25A
GOLD PINK CHROME PINK
OR ROSE CHROME ROSE

C61M
RUTHENIUM ANTI-MATTER BLUE
RUTHÉNium ANTI-MATIÈRE BLEU

AVENIR 3

50 □ 21 H40



C17
BLACK CHROME PINK
NOIR CHROME ROSE



C25
GOLD LINE PINK
OR LINE ROSE

C62M
BLACK ANTI-MATTER RED
NOIR ANTI-MATIÈRE ROUGE

C96M
RUTHENIUM ANTI-MATTER
WHITE
RUTHÉNium ANTI-MATIÈRE
BLANC

AVENIR 4

49 □ 20 H42



C25
GOLD PINK PINK LED
OR ROSE ROSE LED



C79M
GOLD ANTI-MATTER BLACK
OR ANTI-MATIÈRE NOIR

C59M
BLACK ANTI-MATTER WHITE
NOIR ANTI-MATIÈRE BLANC

STAGE 01
MEMORIES 1-2-3



MEMORIES 1
49 □ 21 H44



C17
BLACK BRONZE
NOIR MORDORÉ



C25
GOLD CHROME PINK
OR CHROME ROSE



C96M
GOLD PINK ANTI-MATTER WHITE
OR ROSE ANTI-MATIÈRE BLANC

MEMORIES 2
51 □ 21 H43



C10
RUTHENIUM RED LED
RUTHÉNium ROUGE LED



C72M
BLACK ANTI-MATTER BLUE
NOIR ANTI-MATIÈRE BLEU



C79M
GOLD ANTI-MATTER BLACK
OR ANTI-MATIÈRE NOIR

MEMORIES 3
55 □ 20 H37



C17
BLACK PHOTO BLUE
NOIR PHOTO BLEU



C58M
RUTHENIUM ANTI-MATTER
BLACK
RUTHÉNium ANTI-MATIÈRE
NOIR



C59M
BLACK ANTI-MATTER WHITE
NOIR ANTI-MATIÈRE BLANC

STAGE 01
ANTI-RETRO 1-2-3



ANTI-RETRO 1
49 □ 24 H43



C17
BLACK LINE CHROME
NOIR LINE CHROME



C17A
BLACK LINE BLUE
NOIR LINE BLEU



C17M
BLACK ANTI-MATTER
BLACK
NOIR ANTI-MATIÈRE NOIR



C25
SCRATCHED GOLD CRISTAL
CHROME
OR GRIFFÉ CRISTAL
CHROME



C58M
RUTHENIUM ANTI-MATTER
BLACK
RUTHÉNium ANTI-MATIÈRE
NOIR

ANTI-RETRO 2
48 □ 22 H43



C17
BRONZE BLACK
NOIR MORDORÉ



C17A
BLACK REVO BLUE
NOIR REVO BLEU



C58M
RUTHENIUM ANTI-MATTER
BLACK
RUTHÉNium ANTI-MATIÈRE
NOIR



C72M
BLACK ANTI-MATTER BLUE
NOIR ANTI-MATIÈRE BLEU

ANTI-RETRO 3
48 □ 22 H43



C17
BLACK CRISTAL PINK
NOIR CRISTAL ROSE



C25A
SCRATCHED GOLD
CHROME PINK
OR GRIFFÉ CHROME ROSE



C79M
SCRATCHED GOLD
ANTI-MATTER BLACK
OR GRIFFÉ ANTI-MATIÈRE
NOIR



C80M
BLACK ANTI-MATTER PINK
NOIR ANTI-MATIÈRE ROSE

STAGE 01
ANTI-RETRO 5-6-X



ANTI-RETRO 5
51 □ 20 H41



C17
BLACK LINE BLUE
NOIR LINE BLEU



C17A
BLACK LINE RED
NOIR LINE ROUGE



C79M
SCRATCHED GOLD
ANTI-MATTER BLACK
OR GRIFFÉ
ANTI-MATIÈRE NOIR

ANTI-RETRO 6
45 □ 23 H42



C17
BLACK REVO RED
NOIR REVO ROUGE



C17A
BLACK CHROME BLUE
NOIR CHROME BLEU



C17M
BLACK ANTI-MATTER BLACK
NOIR ANTI-MATIÈRE NOIR



C25
SCRATCHED GOLD
CRISTAL CHROME
OR GRIFFÉ CRISTAL
CHROME



C79M
SCRATCHED GOLD
ANTI-MATTER BLACK
OR GRIFFÉ ANTI-MATIÈRE
NOIR



C80M
BLACK ANTI-MATTER PINK
NOIR ANTI-MATIÈRE ROSE

ANTI-RETRO X
48 □ 23 H43



C79
SCRATCHED GOLD
ANTI-MATTER BLACK
OR GRIFFÉ ANTI-MATIÈRE
NOIR



C72
BLACK ANTI-MATTER BLUE
NOIR ANTI-MATIÈRE BLEU



C17
BLACK ANTI-MATTER
BLACK
NOIR ANTI-MATIÈRE NOIR



C80
BLACK ANTI-MATTER
PINK
NOIR ANTI-MATIÈRE
ROSE



STAGE 02_

GENE 1-2-3



GENE 1
52 □ 20 H43



C59
BLACK/WHITE
NOIR/BLANC



C79
GOLD PINK/BLACK
OR ROSE/NOIR



C96
GOLD/WHITE
OR/BLANC

GENE 2
51 □ 20 H43



C79
GOLD PINK/BLACK
OR ROSE/NOIR



C80
BLACK/FUSHIA
NOIR/FUSHIA



C96
GOLD/BEIGE
OR/BEIGE

GENE 3
50 □ 21 H42



C62
BLACK/RED
NOIR/ROUGE



C79
BLACK/GOLD
NOIR/OR



C96
GOLD PINK/WHITE
OR ROSE/BLANC

> **STAGE 02**
GAMMA 1-2



> **GAMMA 1**

54 □ 19 H36



C57F ■
BLACK/ORANGE
NOIR/ORANGE



C58 ■
RUTHENIUM/BLACK
RUTHÉNIUM/NOIR



C72 ■
BLACK/BLUE
NOIR/BLEU

> **GAMMA 2**

53 □ 22 H40



C56F ■
BLACK/YELLOW
NOIR/JAUNE



C62 ■
BLACK/RED
NOIR/ROUGE



C79 ■
GOLD/BLACK
OR/NOIR

STAGE 02
GENOME 1-3-4



GENOME 1
54 □ 20 H34



C56
BLACK/YELLOW
NOIR/JAUNE



C57F
BLACK/ORANGE
NOIR/ORANGE

C58
RUTHENIUM/BLACK
RUTHENIUM/NOIR

C58M
RUTHENIUM/BLACK
ANTI-MATTER
RUTHENIUM/NOIR
ANTI-MATIÈRE



C62M
BLACK ANTI-MATTER RED
NOIR ANTI-MATIÈRE ROUGE

C64
BROWN/RED
TAUPE/ROUGE



C51
CHROME/ORANGE
CHROME/ORANGE



C62
BLACK/RED
NOIR/ROUGE

C62M
BLACK/RED ANTI-MATTER
NOIR/ROUGE ANTI-MATIÈRE

C72
BLACK/BLUE
NOIR/BLEU



C72M
BLACK ANTI-MATTER BLUE
NOIR ANTI-MATIÈRE BLEU



C58
RUTHENIUM/BLACK
RUTHENIUM/NOIR



C58M
RUTHENIUM/BLACK
ANTI-MATTER
RUTHENIUM/NOIR
ANTI-MATIÈRE

C92
NIGHT BLUE/WHITE
BLEU NUIT/BLANC

C92M
DARK BLUE/WHITE
ANTI-MATTER WHITE
BLEU NUIT/BLANC
ANTI-MATIÈRE BLANC

GENOME 3
52 □ 20 H38

GENOME 4
50 □ 20 H40

STAGE 02_

GENOME 5-6



GENOME 5

52 □ 18 H36



C75
BLACK/PURPLE
NOIR/VIOLET



C79
SCRATCHED GOLD/BLACK
OR GRIFFE/NOIR



C80F
BLACK/FUSHIA
NOIR/FUSHIA

GENOME 6

48 □ 23 H39



C72
BLACK/BLUE
NOIR/BLEU



C79
SCRATCHED GOLD/BLACK
OR GRIFFE/NOIR



C79M
SCRATCHED GOLD/BLACK
ANTI-MATTER
OR GRIFFE/NOIR
ANTI-MATIÈRE



C80F
BLACK/FUSHIA
NOIR/FUSHIA



C80M
BLACK ANTI-MATTER PINK
NOIR ANTI-MATIÈRE ROSE

STAGE 02_

GENOME 7-8



GENOME 7

48 □ 26 H42



C56F
BLACK/YELLOW
NOIR/SAUNE



C58
RUTHENIUM/BLACK
RUTHÉNIUM/NOIR



C72M
BLACK ANTI-MATTER BLUE
NOIR ANTI-MATIÈRE BLEU



C79
SCRATCHED GOLD/BLACK
OR GRIFFÉ/NOIR



C79M
SCRATCHED GOLD/BLACK ANTI-MATTER
OR GRIFFÉ/NOIR ANTI-MATIÈRE

GENOME 8

44 □ 22 H40



C52M
BLACK ANTI-MATTER
GREEN
NOIR ANTI-MATIÈRE VERT



C58
RUTHENIUM/BLACK
RUTHÉNIUM/NOIR



C58M
RUTHENIUM/BLACK
ANTI-MATTER
RUTHÉNIUM/NOIR
ANTI-MATIÈRE



C59
BLACK/WHITE
NOIR/BLANC



C97
SCRATCHED GOLD/PINK
OR GRIFFÉ/ROSE

▶ **STAGE 03**
BECOME A SUPER HUMAN



STAGE 03
DATA 1 QUANTIQ 1



DATA 1
53 □ 19 H35



C17
BLACK LINE CHROME
NOIR LINE CHROME



C17A
BLACK REVO RED
NOIR REVO ROUGE



C72MA
BLACK ANTI-MATTER
BLACK/BLUE
NOIR ANTI-MATIÈRE
NOIR/BLEU



C63M
BLACK ANTI-MATTER
GREY/BLACK
NOIR ANTI-MATIÈRE
GRIS/NOIR

QUANTIQ 1
57 □ 17 H37



C17
BLACK CRISTAL BLUE
NOIR CRISTAL BLEU



C52M
BLACK ANTI-MATTER
BLACK/GREEN
NOIR ANTI-MATIÈRE
NOIR/VERT



C72M
BLACK ANTI-MATTER
BLUE/BLACK
NOIR ANTI-MATIÈRE
BLEU/NOIR



C81
BROWN/WHITE CRISTAL
CHROME
TAUPE/BLANC CRISTAL
CHROME



C88
BLACK/GUN LINE BLUE
NOIR/GUN LINE BLEU



C88M
BLACK/GUN ANTI-MATTER
BLACK/WHITE
NOIR/GUN ANTI-MATIÈRE
NOIR/BLANC

STAGE 03
ZETA 0 VALHALLA 0
MECHA 0



VALHALLA 0
53 □ 13 H41



C59
BLACK/WHITE
NOIR/BLANC



C60
RED/WHITE
ROUGE/BLANC



C79
SCRATCHED GOLD/BLACK
OR GRIFFE/NOIR

ZETA 0
57 □ 17 H32



C52
BLACK/GREEN
NOIR/VERT



C52A
BLACK/KAKI
NOIR/KAKI



C57F
BLACK/ORANGE FLUO
NOIR/ORANGE FLUO



C59
BLACK/WHITE
NOIR/BLANC



C63S
GREYSHIP
GREYSHIP



C72
BLACK/BLUE
NOIR/BLEU

MECHA 0
55 □ 17 H34



C57
BLACK/ORANGE
NOIR/ORANGE



C62
BLACK/RED
NOIR/ROUGE



C72
BLACK/BLUE
NOIR/BLEU



C88
BLACK/GREY
NOIR/GUN

STAGE 03
MECHA 1-2-4
MOLECULE 2



MECHA 1
56 □ 15 H35



C62
BLACK/RED
NOIR/ROUGE



C63S
GREYSHIP/BLACK
GREYSHIP/NOIR



C72
BLACK/BLUE
NOIR/BLEU

MECHA 2
54 □ 16 H34



C57
BLACK/ORANGE
NOIR/ORANGE



C63S
GREYSHIP/BLACK
GREYSHIP/NOIR



C72
BLACK/BLUE
NOIR/BLEU

MECHA 4
53 □ 18 H34



C62
BLACK/RED
NOIR/ROUGE



C72
BLACK/BLUE
NOIR/BLEU



C88
BLACK/BLACK
NOIR/NOIR

MOLECULE 9
57 □ 17 H35



C62
BLACK/RED
NOIR/ROUGE



C63S
GREYSHIP
GREYSHIP



C72
BLACK/BLUE
NOIR/BLEU



FINAL STAGE_

VALHALLA 1-X
VARANA 3-4



VALHALLA 1
50 □ 20 H34



C59
BLACK/WHITE CHROME PINK
NOIR/BLANC CHROME ROSE



C79
SCRATCHED GOLD/BLACK
CRISTAL CHROME
OR GRIFFE/NOIR CRISTAL
CHROME



C79A
SCRATCHED GOLD/BLACK
CHROME PINK
OR GRIFFE/NOIR CHROME
ROSE



C80
BLACK/FUSHIA CRISTAL PINK
NOIR/FUSHIA CRISTAL ROSE

VALHALLA X
50 □ 20 H34



C17
BLACK CRISTAL BLUE
NOIR CRISTAL BLEU



C17A
BLACK REVO GREEN
NOIR REVO VERT



C59
WHITE/BLACK BLACK
FRONT CRISTAL PINK
BLANC/NOIR FACE NOIRE
CRISTAL ROSE

VARANA 3
55 □ 18 H34



C17
BLACK CRISTAL PINK
NOIR CRISTAL ROSE



C17A
BLACK REVO RED
NOIR REVO ROUGE



C75M
BLACK ANTI-MATTER PURPLE
NOIR ANTI-MATIERE VIOLET



C79
SCRATCHED GOLD/BLACK
CRISTAL CHROME
OR GRIFFE/NOIR CRISTAL
CHROME

VARANA 4
57 □ 16 H37



C75
BLACK/PURPLE CRISTAL BLUE
NOIR/VIOLET CRISTAL BLEU



C79
SCRATCHED GOLD/BLACK
CRISTAL PINK
OR GRIFFE/NOIR CRISTAL
ROSE



C79M
SCRATCHED GOLD/BLACK
ANTI-MATTER BLACK
OR GRIFFE/NOIR
ANTI-MATIERE NOIR



C80
BLACK/FUSHIA REVO PINK
NOIR/FUSHIA REVO ROSE

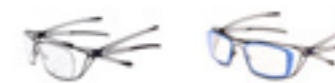
► **FINAL STAGE_**
MAZINGER X-Y
RE-NERVE



► **MAZINGER X**
56 □ 118 H36



C56F ■
BLACK/YELLOW FLUO
NOIR/JAUNE FLUO



C72 ■
BLACK/BLUE
NOIR/BLEU

C72M ■
BLACK ANTI-MATTER BLUE
NOIR ANTI-MATIÈRE BLEU

► **MAZINGER Y**
56 □ 118 H36



C57F ■
BLACK/ORANGE FLUO
NOIR/ORANGE FLUO



C57M ■
BLACK/ORANGE FLUO
ANTI-MATTER
NOIR/ORANGE FLUO
ANTI-MATIÈRE

C72 ■
BLACK/BLUE AA
NOIR/BLEU AA

► **RE-NERVE**
54 □ 200 H52



C63M ■
BROWN ANTI-MATTER
BLACK
TAUPE ANTI-MATIÈRE NOIR

► **FINAL STAGE_**
ORION - HYPERION
MERCURE 1-2



► **ORION**
57 □ 20 H33



C52M ■
BLACK/KAKI ANTI-MATTER
KAKI
NOIR/KAKI ANTI-MATIÈRE
KAKI

► **HYPERION**
57 □ 19 H33



C63M ■
BLACK/GUN ANTI-MATTER
GREY
NOIR/GUN ANTI-MATIÈRE
GRIS

► **MERCURE 1**
56 □ 20 H34



C59M ■
BLACK/WHITE
ANTI-MATTER WHITE
NOIR/BLANC
ANTI-MATIÈRE BLANC

► **MERCURE 2**
56 □ 20 H34



C59M ■
WHITE/BLACK GREY
ANTI-MATTER BLACK
BLANC/NOIR GRIS
ANTI-MATIÈRE NOIR

➤ **BRANDBOOK_**

Discover our universe and eco-system on Parasite Brandbook : the Parasite Design Lab. All DesignLab products are available online.

Découvrez notre univers et notre éco-système sur le Brandbook de Parasite : le Parasite Design Lab. Tous les produits du DesignLab sont disponibles en ligne.

www.parasite-design-lab.com

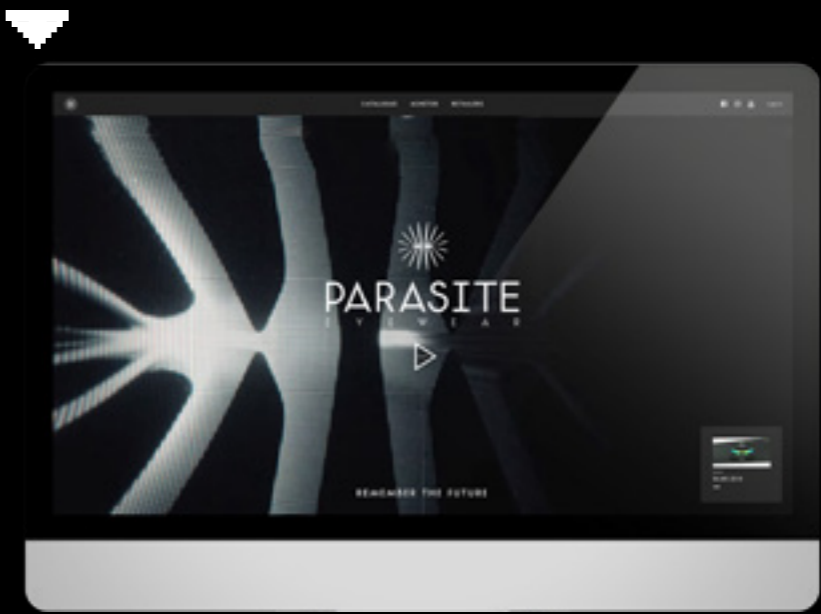
BRANDBOOK PARASITE_ Discover our universe



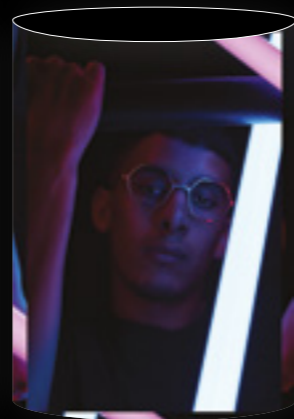
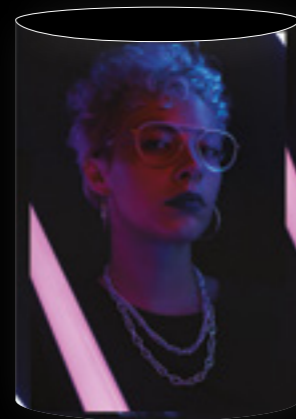
VIDEO_ www.parasite-design.com/VIDEO/video-parasite.zip



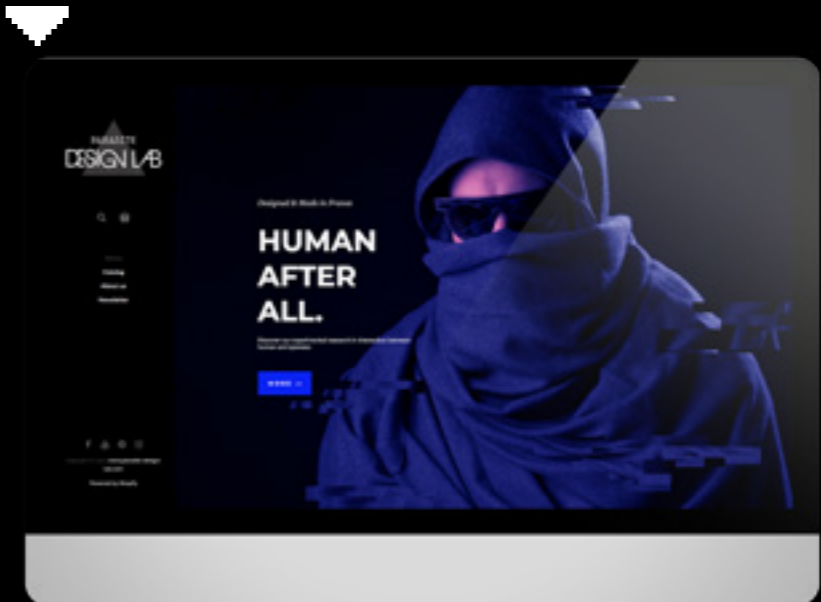
WEBSITE PARASITE_ www.parasite-eyewear.com



PLV & POSTERS/VISUALS_ A3/A4 totems



WEBSITE PARASITE DESIGNLAB (STORE)_ www.parasite-design-lab.com



ENTER INTO PARANORMAL LAB_

Facebook



parasite

Instagram



@parasite.design
@parasiteeyewear

parasite@parasite-design.com
Tél. : +33 (0)4 74 46 28 90
www.parasite-eyewear.com

» FINAL BOSS_
HERE COMES A
NEW CHALLENGER

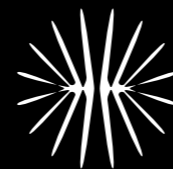
PARASITE

PARASITE DESIGN
HÔTEL D'ENTREPRISE PIERRE BLANCHE
P.I.P.A 1, 3 ALLÉE DES LILAS
01150 SAINT-VULBAS, FRANCE

PARASITE@PARASITE-DESIGN.COM
TÉL. : +33 (0)4 74 46 28 90

▶ ENTER HERE

WWW.PARASITE-EYEWEAR.COM



PARASITE
E Y E W E A R